

Spectra Technologies

Electronics Integrated Systems



RUGGED & INDUSTRIAL PRODUCTS



RUGGED PANEL PC'S,
DISPLAY & CPU

INDUSTRIAL PANEL PC'S,
DISPLAY'S & CPU'S

RUGGED & INDUSTRIAL
UPS, NVR

INDUSTRIAL RACK'S
& CONSOLE'S

KVM SWITCH'S &
KEYBOARD TRAY'S

NETWORK SWITCH'S
& MODEM'S

RUGGED & INDUSTRIAL
MECH ENCLOSURES



❑ COMPANY PROFILE

Spectra Technologies stands as a pioneering leader in the indigenous design, development, and manufacture of Industrial and Rugged Computer products in India. We have proudly served the nation by delivering a comprehensive array of high-performance computing systems engineered for the most demanding environments.

Our commitment to excellence is underscored by our adherence to stringent quality standards. All our products are meticulously designed and manufactured in strict compliance with MIL-STD (Military Standards) EMI/EMC and JSS 55555 Environmental Specifications, ensuring unparalleled robustness and reliability. We are a trusted partner to Government and Private organizations within the Defence sector.

We offer an extensive portfolio of cutting-edge solutions, including: Industrial and Rugged Products
Workstations, Displays and Panel PCs, Rugged Networking Products
Standard and Rugged Racks, Rugged Uninterruptible Power Supplies (UPS)
KVMs (Keyboard, Video, Mouse Switches)

Our product range extends to completely sealed systems and integrates contemporary architectures such as PCI, CPCI, PC-104, PXIe, and VME. These solutions are vital across diverse core sectors, including Defence, Power Plants, Steel Plants, Nuclear Plants, Aerospace, and Railways.

Beyond our product offerings, Spectra Technologies provides specialized CADD Services, encompassing:

Product Design & Development, Conceptual Layouts, Prototype Development, Reverse Engineering, Project Management, Advanced CADD applications

ISO 9001:2015

Certificate Number: 305025071150Q



Head of Certification



□ OUR PRODUCTS RANGE

RUGGED, INDUSTRIAL & MARINE PANEL PCS & DISPLAYS

- 10.1 inch
- 10.4 inch
- 12 inch
- 13.3 inch
- 15 inch
- 15.6 Inch
- 17 Inch
- 19 Inch
- 20 Inch
- 20.1 Inch
- 21.3 inch
- 21.5 Inch
- 23.8 (24)Inch
- 27 Inch
- 32 Inch
- 43 Inch

RUGGED & INDUSTRIAL WORKSTATIONS & CPU

- 3U Workstation
- 4U Workstation
- 3U, 4U, 6U mechanical Enclosure
- Rugged Server

19 INCH INDUSTRIAL M.S & ALUMINIUM PROFILE RACKS

- 12U Rack
- 26U Rack
- 34U Rack
- 18U Rack
- 32U Rack
- 36U Rack
- 38U Rack
- 42U Rack

RUGGED/INDUSTRIAL CONSOLES

- Single Display console
- Dual Display Console
- RCS Console
- Rugged Modem

RUGGED/INDUSTRIAL ONLINE UPS

- 1.5 KVA ONLINE UPS
- 3 KVA ONLINE UPS
- 5KVA ONLINE UPS
- 10KVA ONLINE UPS
- 6KVA ONLINE UPS
- 20KVA ONLINE UPS

RUGGED/INDUSTRIAL MANAGEABLE NETWORK SWITCHES

- 8 Port Switch
- 24 Port Switch
- 48 Port Switch
- 16 Port switch
- 28 Port Switch

CABLE HARNESING / TESTING JIGS & RIGS

- CABLE CRIMPING
- SERICE 3 CRIMPING
- CABLE SOLDERING
- CABLE LABELING
- CABLE BRADING
- CABLE ROUTING
- RACK LEVEL TEST JIGS
- UNIT LEVEL TEST JIGS

OTHER RUGGED/INDUSTRIAL PRODUCTOS

- 17 Inch KVM Switch
- 19 Inch KVM Switch
- Rugged Foldable display Keyboards
- Rugged programmable Power Supply
- 7" Tab Rugged Enclosure
- 10" Tab rugged enclosure
- Rugged VME/PXIE Enclosure
- 15.6 Inch Rugged Laptop
- Rugged NVR
- Rugged 1U Keyboards
- Rugged Controllers



RUGGED & INDUSTRIAL PANEL PCS

10.1 INCH RUGGED PANEL PC

MODEL NO: ST-101RPPC

KEY FEATURES

- 10.1-inch TFT LCD ,500 Nits, 1024 x 768
- Intel® Core ,i3, i5, i7, Intel® Celeron
- 128/256 GB SSD
- 4/8 GB RAM DDRL4
- 2 x Gigabit Ethernet
- 2 x USB 2.0, 2 x USB 3.0, 2 x COM
- MIL-STD-461E/F, MIL-STD-810G
- OPT: -20°C to + 55°C
- STT: -40°C to + 65°C



10.4 INCH RUGGED PANEL PC

MODEL NO: ST-104RPPC

KEY FEATURES

- 10.4-inch TFT LCD ,400 Nits, 1024 x 768
- Intel® Core ,i3, i5, i7, Intel® Celeron
- 256 GB SSD
- 4/8 GB RAM DDRL4
- 2 x Gigabit Ethernet
- 2 x USB 2.0, 2 x USB 3.0, 2 x COM
- MIL-STD-461E/F, MIL-STD-810G
- OPT: -20°C to + 55°C
- STT: -40°C to + 65°C



13.3 INCH RUGGED PANEL PC

MODEL NO: ST-133RPPC

KEY FEATURES

- 13.3-inch TFT LCD ,500 Nits, 1920 x 1080
- Intel® Core ,i3, i5, i7, Intel® Celeron
- 128/256 GB SSD
- 4/8 GB RAM DDRL4
- 2 x Gigabit Ethernet
- 2 x USB 2.0, 2 x USB 3.0, 2 x COM
- MIL-STD-461E/F, MIL-STD-810G
- OPT: -20°C to + 55°C
- STT: -40°C to + 65°C



15 INCH RUGGED PANEL PC**MODEL NO: ST-15RPPC****KEY FEATURES**

- 15-inch TFT LCD ,450/1000 Nits, 1024 x 768
- Intel® Core, i5, i7, Intel® Celeron
- 512 GB SSD
- 8 GB RAM DDRL4
- 2 x Gigabit Ethernet
- 2 x USB 2.0, 2 x USB 3.0, 2 x COM
- MIL-STD-461E/F, MIL-STD-810G
- OPT: -20°C to + 55°C
- STT: -40°C to + 65°C

**15.6 INCH RUGGED PANEL PC****MODEL NO: ST-156RPPC****KEY FEATURES**

- 15.6-inchch TFT LCD ,500 Nits, 1920 x 1080
- Intel® Core, i5, i7
- 512 GB SSD
- 16 GB RAM DDRL4
- 2 x Gigabit Ethernet
- 2 x USB 2.0, 2 x USB 3.0, 2 x COM
- MIL-STD-461E/F, MIL-STD-810G
- OPT: -20°C to + 55°C
- STT: -40°C to + 65°C

**17 INCH RUGGED PANEL PC****MODEL NO: ST-17RPPC****KEY FEATURES**

- 17-inch TFT LCD ,350 Nits, 1280 x 1024
- Intel® Core, i5, i7,
- 512 GB SSD
- 8 GB RAM DDRL4
- 2 x Gigabit Ethernet
- 2 x USB 2.0, 2 x USB 3.0, 2 x COM
- MIL-STD-461E/F, MIL-STD-810G
- OPT: -20°C to + 55°C
- STT: -40°C to + 65°C



19 INCH RUGGED PANEL PC**MODEL NO: ST-19RPPC****KEY FEATURES**

- 19-inch TFT LCD ,450 Nits, 1280 x 1024
- Intel® Core, i5, i7,
- 512 GB SSD
- 8 GB RAM DDRL4
- 2 x Gigabit Ethernet
- 2 x USB 2.0, 2 x USB 3.0, 2 x COM
- MIL-STD-461E/F, MIL-STD-810G
- OPT: -20°C to + 55°C
- STT: -40°C to + 65°C

**21.5 INCH RUGGED PANEL PC****MODEL NO: ST-215RPPC****KEY FEATURES**

- 21.5-inch TFT LCD ,450/800 Nits, 1920 x 1080
- Intel® Core, i5, i7, i9
- 512GB/1TB SSD
- 16 GB RAM DDRL
- 2 x Gigabit Ethernet
- 2 x USB 2.0, 2 x USB 3.0, 2 x COM
- MIL-STD-461E/F, MIL-STD-810G
- OPT: -20°C to + 55°C
- STT: -40°C to + 65°C

**24 INCH RUGGED PANEL PC****MODEL NO: ST-24RPPC****KEY FEATURES**

- 24-inchTFT LCD ,450/1000 Nits, 1920 x 1080
- Intel® Core, i5, i7, i9
- 512GB/1TB SSD
- 8/16 GB RAM DDRL
- 2 x Gigabit Ethernet
- 2 x USB 2.0, 2 x USB 3.0, 2 x COM
- MIL-STD-461E/F, MIL-STD-810G
- OPT: -20°C to + 55°C
- STT: -40°C to + 65°C



27 INCH RUGGED PANEL PC**MODEL NO: ST-27RPPC****KEY FEATURES**

- 27-Inch TFT LCD ,450/1000 Nits, 1920 x 1080
- Intel® Core, i5, i7, i9
- 512GB/1TB SSD
- 8/16 GB RAM DDRL
- 2 x Gigabit Ethernet
- 2 x USB 2.0, 2 x USB 3.0, 2 x COM
- MIL-STD-461E/F, MIL-STD-810G
- OPT: -20°C to + 55°C
- STT: -40°C to + 65°C

**32 INCH RUGGED PANEL PC****MODEL NO: ST-32RPPC****KEY FEATURES**

- 32-inchTFT LCD ,450/1000 Nits, 1920 x 1080
- Intel® Core, i5, i7, i9
- 512GB/1TB SSD
- 8/16 GB RAM DDRL
- 2 x Gigabit Ethernet
- 2 x USB 2.0, 2 x USB 3.0, 2 x COM
- MIL-STD-461E/F, MIL-STD-810G
- OPT: -20°C to + 55°C
- STT: -40°C to + 65°C

**55 INCH RUGGED PANEL PC****MODEL NO: ST-55RPPC****KEY FEATURES**

- 55-inchTFT LCD ,450/1000 Nits, 1920 x 1080
- Intel® Core, i5, i7, i9
- 512GB/1TB SSD
- 8/16 GB RAM DDRL
- 2 x Gigabit Ethernet
- 2 x USB 2.0, 2 x USB 3.0, 2 x COM
- MIL-STD-461E/F, MIL-STD-810G
- OPT: -20°C to + 55°C
- STT: -40°C to + 65°C



RUGGED & INDUSTRIAL DISPLAYS

10.1 INCH RUGGED LCD DISPLAY

MODEL NO: ST-101IRLD

KEY FEATURES

- 10.1-inch TFT LCD Display
- 350/450/800 Nits (cd/m²)
- 1024 x 768
- Capacitive & Resistive Touch
- VGA / HDMI & DVI
- OSD KEYPAD
- ALUMINIUM HE30
- OPT: -10°C to + 55°C
- MIL-STD-461E/F, MIL-STD-810G



10.4 INCH RUGGED LCD DISPLAY

MODEL NO: ST-104IRLD

KEY FEATURES

- 10.4-inch TFT LCD Display & Anti-glare 3H
- 350 Nits (cd/m²)
- 1024 x 768
- Capacitive & Resistive Touch
- VGA / HDMI & DVI
- 16.2 M Color
- ALUMINIUM HE30
- OPT: -30°C to + 80°C
- MIL-STD-461E/F, MIL-STD-810G



13.3 INCH RUGGED LCD DISPLAY

MODEL NO: ST-133IRLD

KEY FEATURES

- 13.3-inch TFT LCD Display & Anti-glare 3H
- 400 Nits (cd/m²)
- 1920 x 1080
- 16.7M Color & 800:1
- Capacitive & Resistive Touch
- VGA / HDMI & DVI
- ALUMINIUM HE30
- OPT: -10°C to + 55°C
- MIL-STD-461E/F, MIL-STD-810G



15 INCH RUGGED LCD DISPLAY**MODEL NO: ST-15IRLD****KEY FEATURES**

- 15-inch TFT LCD Display
- 450/100 Nits (Cd/m²)
- 1024 x 768
- Capacitive & Resistive Touch
- VGA / HDMI & DVI
- 16.2M Color ,700:1 Contrast Ratio
- ALUMINIUM HE30
- OPT: -30°C to + 85°C
- MIL-STD-461E/F, MIL-STD-810G

**15.6 INCH RUGGED LCD DISPLAY****MODEL NO: ST-156IRLD****KEY FEATURES**

- 15.6-inch TFT LCD Display
- 500/1000 Nits (Cd/m²)
- 1920 x 1080
- Capacitive & Resistive Touch
- VGA / HDMI & DVI
- 16.2M Color ,1000:1 Contrast Ratio
- ALUMINIUM HE30
- OPT: -20°C to + 65°C
- MIL-STD-461E/F, MIL-STD-810G

**17 INCH RUGGED LCD DISPLAY****MODEL NO: ST-17IRLD****KEY FEATURES**

- 17-inch TFT LCD Display & Anti-glare 3H
- 350 Nits (Cd/m²)
- 1280 x 1024
- Capacitive & Resistive Touch
- VGA / HDMI & DVI
- 16.7M Color ,1000:1 Contrast Ratio
- ALUMINIUM HE30
- OPT: -10°C to + 55°C
- MIL-STD-461E/F, MIL-STD-810G



19 INCH RUGGED LCD DISPLAY**MODEL NO: ST-19IRLD****KEY FEATURES**

- 19-inch TFT LCD Display & Anti-glare 3H
- 350 Nits (Cd/m²)
- 1280 x 1024
- Capacitive & Resistive Touch
- VGA / HDMI & DVI
- 16.7M Color ,1000:1 Contrast Ratio
- ALUMINIUM HE30
- OPT: -30°C to + 85°C
- MIL-STD-461E/F, MIL-STD-810G

**21.5 INCH RUGGED LCD DISPLAY****MODEL NO: ST-21.5IRLD****KEY FEATURES**

- 21.5-inch TFT LCD Display & Anti-glare 3H
- 500/1000 Nits (Cd/m²)
- 1920 x 1080
- Capacitive & Resistive Touch
- VGA / HDMI & DVI
- 16.7M Color ,1000:1 Contrast Ratio
- ALUMINIUM HE30
- OPT: -10°C to + 65°C
- MIL-STD-461E/F, MIL-STD-810G

**24 INCH RUGGED LCD DISPLAY****MODEL NO: ST-24IRLD****KEY FEATURES**

- 23.8-inch TFT LCD Display & Anti-glare 3H
- 250/500 Nits (Cd/m²)
- 1920 x 1080
- Capacitive & Resistive Touch
- VGA / HDMI & DVI
- 16.7M Color ,1000:1 Contrast Ratio
- ALUMINIUM HE30
- OPT: -10°C to + 55°C
- MIL-STD-461E/F, MIL-STD-810G



27 INCH RUGGED LCD DISPLAY**MODEL NO: ST-27IRLD****KEY FEATURES**

- 27-inch TFT LCD Display & Anti-glare 3H
- 350 Nits (Cd/m²)
- 3840 x 2160
- Capacitive & Resistive Touch
- VGA / HDMI & DVI
- 1.07B Color ,1000:1 Contrast Ratio
- ALUMINIUM HE30
- OPT: -10°C to + 65°C
- MIL-STD-461E/F, MIL-STD-810G

**32 INCH RUGGED LCD DISPLAY****MODEL NO: ST-32IRLD****KEY FEATURES**

- 32-inch TFT LCD Display & Anti-glare 3H
- 400 Nits (Cd/m²)
- 1920 x 1080
- Capacitive & Resistive Touch
- VGA / HDMI & DVI
- 16.7M Color ,1000:1 Contrast Ratio
- ALUMINIUM HE30
- OPT: 0°C to + 65°C
- MIL-STD-461E/F, MIL-STD-810G

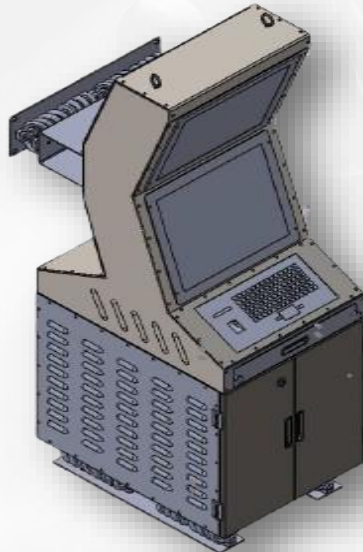
**55 INCH RUGGED LCD DISPLAY****MODEL NO: ST-55IRLD****KEY FEATURES**

- 55-inch TFT LCD Display & Anti-glare 3H
- 450/500 Nits (Cd/m²)
- 1920 x 1080
- Capacitive & Resistive Touch
- VGA / HDMI & DVI
- 16.7M Color ,1000:1 Contrast Ratio
- ALUMINIUM HE30
- OPT: 0°C to + 55°C
- MIL-STD-461E/F, MIL-STD-810G



3/5/10/20KVA RUGGED ONLINE UPS**MODEL NO: ST-KVAOUPS****KEY FEATURES**

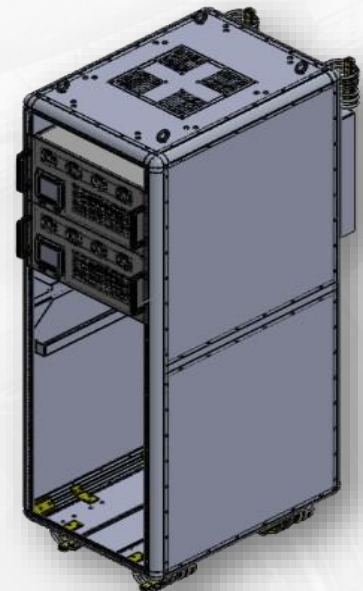
- 3/5/10/20 KVA/KW DOUBLE CONVERSION ONLINE UPS
- 6U, 19Inch Rack Mount
- AC 230/415 V 50-60Hz
- 3P 4-wire (3P+R,Y,B,N) 3-Wire(1P+N+E)
- Rated Power 5000/1000/16000 W
- Lead-acid/Li-Ion Battery
- Efficiency 84,94% (full load)
- MIL-STD-461E/F, MIL-STD-810G
- OPT: -10°C to + 55°C
- STT: -20°C to + 65°C

**32U DUAL DISPLAY CONSOLE****MODEL NO: ST-32U19DDC****KEY FEATURES**

- Dual Display Console, 19Inch, 32U
- Aluminum HE30/SS 316G
- Bottom cover bolted to frame with cable Entry
- Side Vented / Perforated
- Wire rope isolators/Castor Wheels
- W x 650, D x 800, H x 1650 mm
- Key board Tray, Trackball
- DIN Standard 10mm
- MIL-STD-810G

19 INCH RUGGED 36U RACK**MODEL NO: ST-32U19AR****KEY FEATURES**

- 19Inch 36U Rack, Aluminum HE30/SS 316G
- Aluminum HE30/SS 316G
- Top cover bolted frame with Fans
- Bottom cover bolted to frame with cable Entry
- Front & Rear lockable Doors
- Side Vented / Perforated
- Wire rope isolators/Castor Wheels
- W x 545, D x 750, H x 1750 mm
- DIN Standard 10mm, Rack ground Bus bar
- MIL-STD-810G



15.6 INCH RUGGED LAPTOP**MODEL NO: ST-156RLTP****KEY FEATURES**

- 15.6-inch TFT LCD ,450 Nits, 1280 x 1024
- Intel® Core i7 – 10th Gen
- 512 GB SSD
- 8/16 GB RAM DDRL4
- Integrated graphic
- 2 x Gigabit Ethernet
- 2 x USB 2.0, 2 x USB 3.0, 2 x COM
- MIL-STD-461E/F, MIL-STD-810G
- OPT: -20°C to + 55°C
- STT: -40°C to + 65°C

**INDUSTRIAL PANEL PC & KEYBOARD****MODEL NO: ST-IPPC19FDKB****KEY FEATURES**

- 19-inch FT LCD ,450 Nits, 1920 x 1080
- Intel® Core i5, i7 – 10th Gen
- 512 GB SSD, 8/16 GB RAM DDRL4
- ATX/MB, Integrated graphic, Dedicated slot
- Aluminum HE30
- 2 x USB 2.0, 2 x USB 3.0, 2 x COM, 2 x Gigabit Ethernet
- Rugged multi languages keyboard with touch/track ball
- D38999 series Connectors
- MIL-STD-461E/F, MIL-STD-810G
- OPT: -20°C to + 55°C, STT: -40°C to + 65°C

**13.3 INCH RUGGED LAPTOP****MODEL NO: ST-133RL-I7****KEY FEATURES**

- 13.3-inch TFT LCD ,400 Nits, 1920 x 1080
- Intel® Core™ i7-1280P vPro® Processor
- 2TB PCIe NVMe SSD or better
- 32 GB DDR4
- 1 x Gigabit Ethernet
- 2 x USB 3.2, 1 x HDMI, 1 x RJ45, 1 x Type C
- MIL-STD-810G / MIL-STD-461E/F



19 INCH INDUSTRIAL PC

MODEL NO: ST-4U19IPC

KEY FEATURES

- Intel Core i7-10th Gen
- PICMG 1.3 Backplane
- 1TB SATA 3.0 HDD & 256 GB SSD
- 16GB RAM DDR4 up to 64GB
- 2 x Gigabit Ethernet
- 3 x USB 2.0, 2 x USB 3.0, 1 x RS-232
- LINUX (RHEL)
- 19-Inch Rack Mountable 4U Chassis



7 INCH RUGGED TABLET PC

MODEL NO: ST-7IRTBPC

KEY FEATURES

- Rugged Tablet PC
- Intel® Core, i3 or Celeron® N3350 Processor SoC
- Intel® Atom®/ Pentium® N4200/ 512 GB SSD
- 4 GB RAM DDR4
- 64/128 GB SSD
- 2 x Ethernet
- 2 x USB
- FAN Less Design



INDUSTRIAL GRADE BOX PC

MODEL NO: ST-I3-IGBPC

KEY FEATURES

- Industrial Grade Box PC
- Intel® Core, i3
- 512 GB SSD
- 4 GB RAM DDR4
- 2 x Gigabit Ethernet
- 4 x USB
- Galvanized sheet steel
- FAN Less Design



19 INCH 12U OUTDOOR RACK**MODEL NO: ST-1912UOR-01****KEY FEATURES**

- 19Inch 12U Outdoor Rack
- MS/SS, CRCA /SS 304
- Top cover galvanized sheet steel
- Bottom cover Gland plates for Cable Entry
- Front & Rear Hinged door with cam lock Doors
- W x 600, D x 600, H x 533 mm
- IP56
- PDU
- RAL 7035

**19 INCH 9U INDOOR RACK****MODEL NO: ST-199UIR-01****KEY FEATURES**

- 19Inch 9U Indoor Rack
- MS/SS, CRCA /SS 304
- Exhaust fans with filters
- Front & Rear Glazed, Hinged door with cam lock Doors
- W x 600, D x 550, H x 480 mm
- IP20
- PDU
- RAL 7035

19 INCH 42U INDOOR RACK**MODEL NO: ST-1942UIR-01****KEY FEATURES**

- 19Inch 42U Indoor Rack
- MS/SS, CRCA /SS 304
- Top cover galvanized sheet steel
- Exhaust fans with filters
- Front & Rear Glazed, Hinged door with cam lock Doors
- 3 Point locking on front & rear doors
- W x 800, D x 1000, H x 42U
- IP20
- PDU
- RAL 7035



DESKTOP RUGGED VME/PXIE ENCLOSURE**MODEL NO: ST-DR7U-VME/PXIE****KEY FEATURES**

- Rugged 7U VME/PXIE Enclosure
- Aluminum HE30
- W 485 x D 650 x H 310 mm
- IP 54 Sealing
- Front Hatch Door
- MIL-STD-810G
- OPT: -20°C to + 55°C, STT: -40°C to + 65°C

**DUAL DISPLAY OPERATOR CONTROL CONSOLE****MODEL NO: ST-DD240PC****KEY FEATURES**

- Base 3 x 19-inch rack mountable sections
- Aluminum & MS (CRCA) Console base material
- Dual Display
- Operating Control Console
- Heavy duty tween type caster wheels with levers
- Heavy duty Arms
- Korean top – double layer
- Electric columns sets for movement of monitor
- Hinges, knobs, hydraulic, handles

19 INCH 13U CONSOLE**MODEL NO: ST-19I-13UCM****KEY FEATURES**

- 19 Inch 13U Console
- AL HE-30/5020Gr
- 13U Base Rack With Openable Doors
- 2 x Monitor Arms support
- Conductive Achromatization
- Powder Coating / Painting
- Lockable Side doors
- Fans For Cooling
- STT: -40°C to + 65°C



19 INCH 4U INDUSTRIAL PC**MODEL NO: ST-104D-19I4UIPC****KEY FEATURES**

- Intel Core i7-10th Gen
- 10.4-inch TFT LCD
- ATX/PICMG 1.3 Backplane
- 1TB SATA 3.0 HDD & 256 GB SSD
- 16GB RAM DDR4 up to 64GB
- 2 x Gigabit Ethernet
- 3 x USB 2.0, 2 x USB 3.0, 1 x RS-232
- Windows / LINUX (RHEL)
- 19-Inch Rack Mountable 4U Chassis with keyboard

**17INCH INDUSTRIAL TRIPLE DISPLAY****MODEL NO: ST-24RPPC****KEY FEATURES**

- 3 x 17-inch TFT LCD Display & Anti-glare 3H
- 350 Nits (Cd/m²)
- 1280 x 1024
- Capacitive & Resistive Touch
- VGA / HDMI & DVI
- 16.7M Color ,1000:1 Contrast Ratio
- ALUMINIUM HE30
- Keyboard & Touch pad
- OPT: -10°C to + 55°C

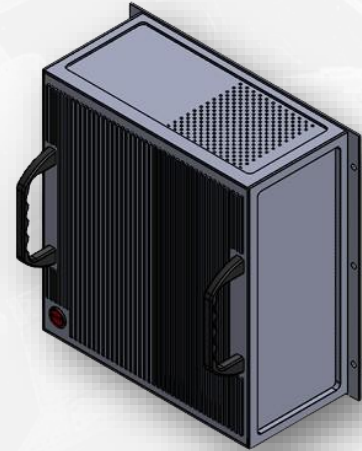
**19 INCH KVM SWITCH****MODEL NO: ST-19KVMS****KEY FEATURES**

- 15-inch TFT LCD ,250 Nits
- 1280 x 1024
- 1U
- 8 PORT SWITCH VGA/LAN/HDMI
- KEYBOARD
- TOUCH PAD
- MIL-STD-461E/F, MIL-STD-810G
- OPT: -10°C to + 55°C
- STT: -20°C to + 75°C

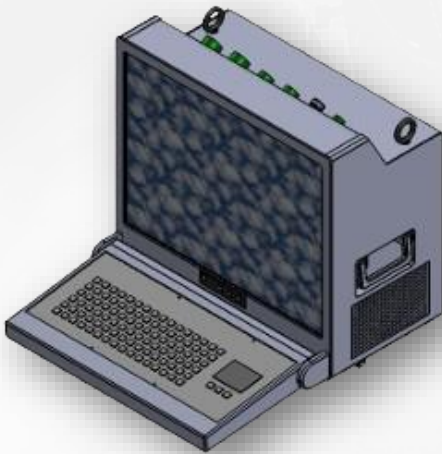


RUGGED COMPUTER**MODEL NO: ST-I71TRC****KEY FEATURES**

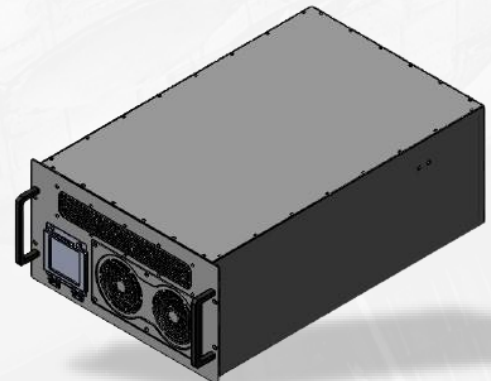
- Intel Core-i7 12th Gen
- 1TB M.2 PCIe NVME
- 64GB RAM DDR4 up to 128GB
- HDMI,DVI
- 4 x Gigabit Ethernet
- 4 x USB 3.0
- 2 x RS-422/485
- Windows-11 IoT

**RUGGED CONSOLE****MODEL NO: ST-I91TRC****KEY FEATURES**

- Intel Core-i9 12th Gen
- 1TB M.2 PCIe NVME
- 64GB RAM DDR5
- 21.3-inch LCD
- 2 x Gigabit Ethernet
- 2 x USB 3.0, 1 x USB 2.0
- 2 x RS-232/422/485
- Windows-11 pro & RHEL 8.x

**1 KVA ONLINE RUGGED UPS****MODEL NO: ST-1KVARUPS****KEY FEATURES**

- 1 KVA/1000VA Double-conversion On-line UPS
- 4U, 19-inch Rack mount
- 1- \emptyset 230VAC Input & Output Voltage
- Rated power 800 W
- Li-Ion / Lead-acid Battery
- Efficiency 88 % (full load)
- MIL-STD-810G, MIL-STD-461E/F
- -10 °C ... + 55 °C

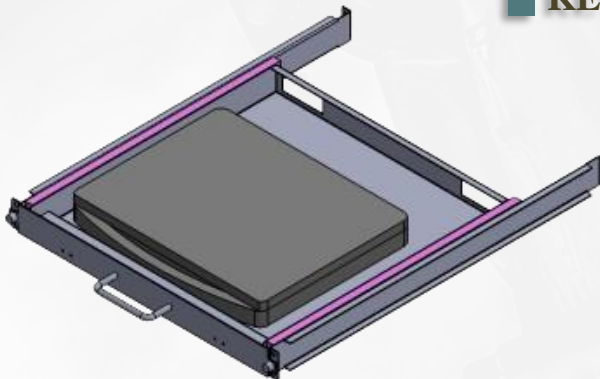


19 INCH 1U DISPLAY MONITORS WITH KB & MS**MODEL NO: SPT-191U-17LDM****KEY FEATURES**

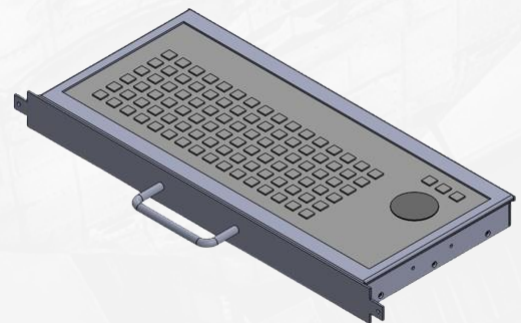
- 17-inch TFT LCD Display & Anti-glare 3H
- 350 Nits (Cd/m²)
- 1280 x 1024
- Contrast Ratio : 1000:1
- VGA / HDMI or DVI
- 16.7M Color
- ALUMINIUM HE30/ MS
- OPT: -10°C to + 55°C

**1U INDUSTRIAL LAPTOP TRAY****MODEL NO: ST-1U19ILPT****KEY FEATURES**

- 1U Laptop Tray
- 19" Slide mountable laptop tray
- AL HE-30/5020Gr
- Front Handle
- Powder Coating / Painting
- 16.7M Color ,1000:1 Contrast Ratio
- 19-inch rack mountable tray

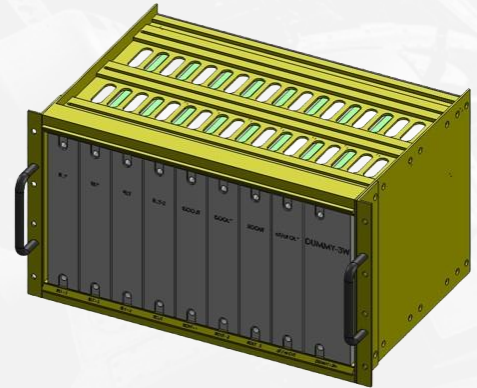
**1U/2U RUGGED KEYBOARD****MODEL NO: ST-1U104TBRK****KEY FEATURES**

- 1U Rugged Keyboard
- AL HE-30/5020Gr
- Vandal Proof
- IP 65 Sealed Keyboard
- 104 Keys With Trackball
- Powder Coating / Painting
- Metal Keyboard
- Slideraiels
- Opt: 0°C to + 55°C

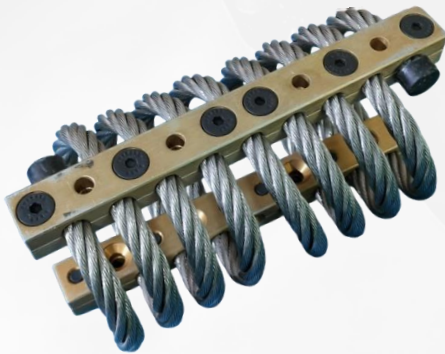


19 INCH RACK MOUNTED 5U CARD CAGE**MODEL NO: ST-5U19IRMCC****KEY FEATURES**

- 5U 84T Card Cage
- 19 Inch Rack Mountable
- Suitable for 4U height cards
- AL HE-30/5020Gr
- Customized solutions
- Different card heights & depths
- Front Handle

**WIRE ROPE ISOLATORS****MODEL NO: ST-W719SVI****KEY FEATURES**

- High performance shock & vibration isolators
- 7/19 twisted wire rope
- SS304 Gr.
- AL HE-30 Retaining bars
- Corrosion resistant
- Racks Mount, Consoles and outdoor cabinets

**C BAND & X BAND HORN****MODEL NO: ST-CBH & ST-XBH****KEY FEATURES**

- | | |
|----------------------|--------------------|
| ▪ C BAND HORN | X BAND HORN |
| ▪ 3.95 - 5.85 GHz | 8.20 – 12.4 GHz |
| ▪ GAIN 15 – 18 dB | GAIN 15 – 18 dB |
| ▪ VSRW 1.25 max | VSRW 1.25 max |
| ▪ WR 187 | WR 90 |
| ▪ Aluminum | Aluminum |
| ▪ N type female coax | N type female coax |



24 PORT RUGGED NETWORK SWITCH

MODEL NO: ST-104D-19I4UIPC

KEY FEATURES

- 24 port L2 & L3 Switch
- 10/100/1000 Mbps
- Routing RIP V2, OSPF
- IPv4, IPv6
- 24 x Gigabit Ethernet
- 19 Inch 4U Rack mount
- Connectors D38999
- Aluminium HE30



CNC MILLING ,RF HOUSING & TEST JIGS

MODEL NO: ST-24RPPC

KEY FEATURES

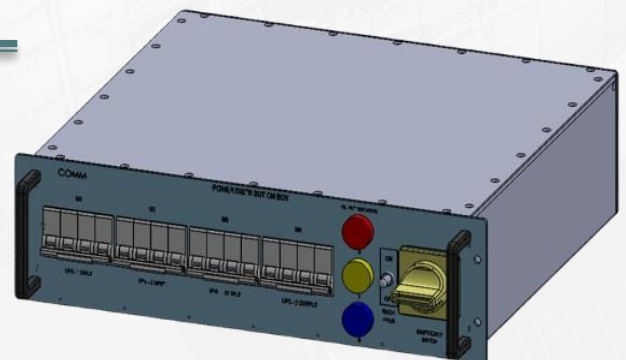
- CNC MILLING ,RF HOUSING & TEST JIGS
- Aluminum He30 / 64430 / HE15 / HE301280 x 1024
- Conductive chromatizations
- IS: 11232 of 1985 std
- MIL C-5541F AS PER QAP
- CNC milling with tolerance of +/- 0.05mm
- RF housings for transmitters, receivers
- RF switches and electronics Encapsulation
- Test jigs as per customer requirement

19 INCH 3U RUGGED PDU

MODEL NO: ST-19I3UPDU

KEY FEATURES

- 3 Phase PDU
- IN & OUT MCB's
- 19 INCH 3U Rack Mount
- R Y B LED Indication
- Emergency Switch
- MIL Connectors
- MIL-STD-461E/F, MIL-STD-810G
- OPT: -10°C to + 55°C
- STT: -20°C to + 75°C





CNC MACHINE VMC-800 IN HOUSE CNC , DRILLING & TAPPING

❑ Mechanical Fabrication and Precision Works

We manufacture and supply the precision Engineering (CNC Machined) components and sub-Assemblies, Assembled Cabinets, Keyboard shelf's on sliders, racks, enclosures, console, wire rope isolators, Rugged chassis, Ethernet switches, Analog receiver mechanical box assemblies, Mb Holding plate assemblies used in missile, aerospace applications and according to the customer requirements.



We implement the ISO Quality Policies to Supply the High and Precision Jobs without any Reworks and Rejections with the optimization and in time of delivery. We proud that our clients were very satisfied with Our

- ❖ Competitive Price
- ❖ Timely Delivery with Quality.

We are Interested in LONG TERM ASSOCIATION with you, to undertake development and production of any type of mechanical assemblies.

Production Activity: Precision Machined Components using CNC Machines, Sheet Metal Fabrication & Sub-assemblies.



OUR CLIENTS

DRDO & RCI



BEL



BHEL



ECIL



DIGILOGIC



ICOMM



ASCENTECH



GTRE



AVON DEFENCE



BDL





Spectra Technologies

Electronics Integrated Systems

Contact Us

H.No. 12-2/45/A/1, Srinagar Colony, Opp Bharath Petrol Pump, Industrial Area, Rampally (M), Medchal (D) - 501301.

www.spectratechnologies.org

Email : info@spectratechnologies.org

Cell: 9885565299 / 9700114027, Tel: 040 48442889